

Instructions

Performance Ball joints - Camber Adjustable

This instruction sheet should be used in conjunction with the workshop manual and proper safety procedures followed.



WHITELINE Performance ball joints are designed to offer easy camber adjustment - offering the ability to increase negative camber or to balance the vehicle's L and R camber values.

Application - Honda Civic
- Si and Sport
- RS Sedan 2019-on
- RS Hatch 2020-on
(vehicles with M14 ball joints)

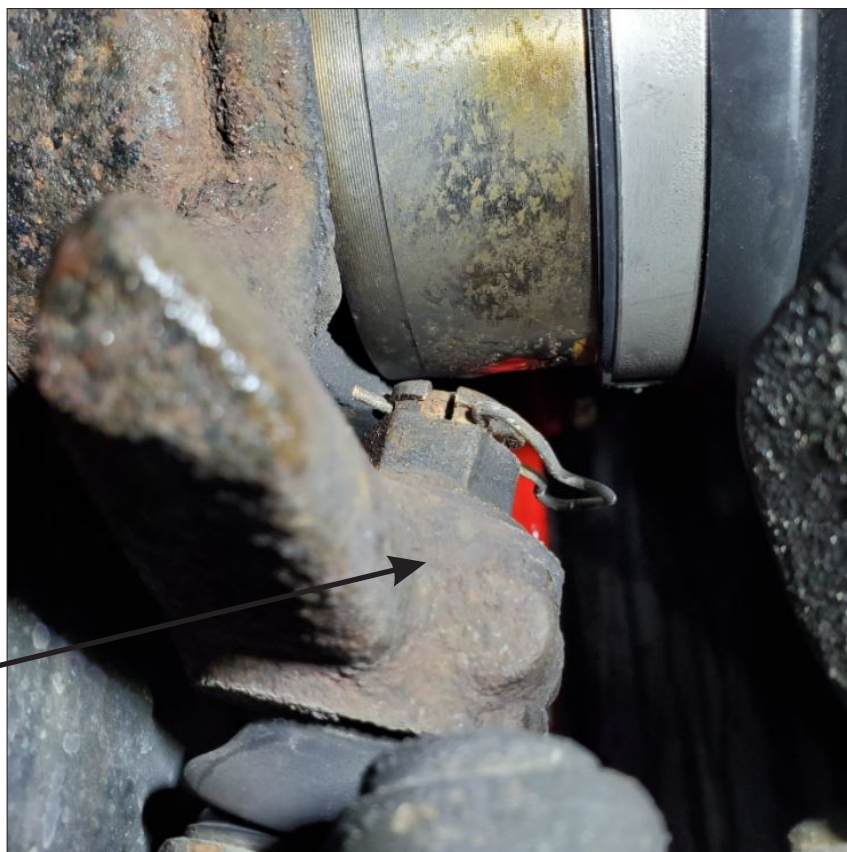
Contents - 2x Performance Engineered ball joints.
- 6x M12x30 flange bolts
- 6x M12 flange nuts

WHITELINE recommends alignment settings are noted before install.

- Start by raising the vehicle evenly - safely support with jack stands.

Never rely on a Jack only

- Proceed to remove front wheels.
- Remove OE safety pin. Using a spanner, loosen the OE flange nut (but do not remove yet).
- Strike the Hub to jar the taper and loosen ball joint.



N.B: It is recommended that a licenced workshop or tradesperson carry out the above procedure and that workshop manual and relevant safety procedures are followed in addition to the above.

Instructions Performance Ball joints - Camber Adjustable

This instruction sheet should be used in conjunction with the workshop manual and proper safety procedures followed.



- Loosen the lower 3 control arm nuts
Completely remove nuts.



- Remove Ball Joints from vehicle.
Do not discard upper flange nut.

N.B: It is recommended that a licenced workshop or tradesperson carry out the above procedure and that workshop manual and relevant safety procedures are followed in addition to the above.

Instructions

Performance Ball joints - Camber Adjustable

This instruction sheet should be used in conjunction with the workshop manual and proper safety procedures followed.



- Install new WHITELINE ball joint to Hub.

Note - re-use OE upper flange nut.

A new split pin is supplied if old unit is damaged or lost.



- Bolt up control arm with new supplied nuts and bolts.
- Tighten M12 bolts to 110Nm

IMPORTANT - a wheel alignment is required immediately after install.

- Re-check all bolts after 100kms

N.B: It is recommended that a licenced workshop or tradesperson carry out the above procedure and that workshop manual and relevant safety procedures are followed in addition to the above.