

# Instructions

## Front Swaybar - Quick Release Links

This instruction sheet should be used in conjunction with the workshop manual and proper safety procedures followed.

**Application** - Jeep Wrangler  
- JL Series

Important - this product is designed for raised vehicles 2-6 inches.



- Contents**
- 2x complete links
  - ball joint and bushing.
  - 2x 12mm ID washers for ball joint
  - 2x M12 nyloc nuts for ball joints
  
  - 2x diff brackets
  - 1x M12x40mm bolt for diff bracket
  - 1x M12 nyloc nut for diff bracket
  - 2x M12 flat washers
  - 1x steel tube 19x13.2x28
  
  - 2x chassis brackets
  - 2x small flange screws - for chassis
  - 2x larger flange screws - for chassis
  
  - 2x R clips
  
  - 2x disconnect studs
  - 2x M12 flange nuts for disconnect studs
  - 2x M12 flat washers for disconnect studs
  
  - 2x chassis studs
  - 2x 3/8 nyloc nuts for chassis studs
  - 2x flat washers for chassis studs

**\*\*Tip - lube all threads prior to dismantle\*\***

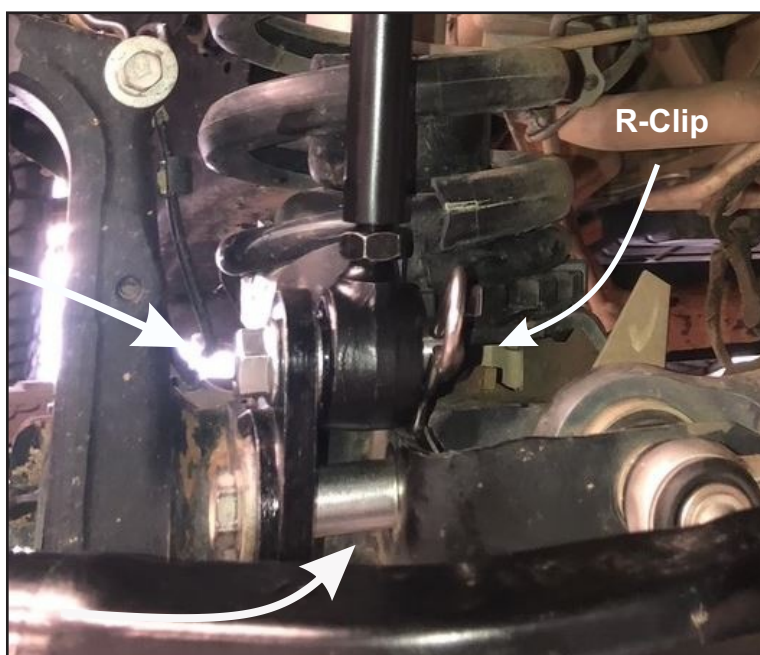
- Raise vehicle evenly and safely support.

*Never rely on a Jack only*

- Remove original links from vehicle.
- Proceed to bolt up diff brackets to diff - using OE bolt for RH side
- Bolt up disconnect pin using M12 flange nut and washer.

**Note - use supplied steel tube for RH side and supplied M12x40mm bolt for LH side.**

**Refer Page 2**



N.B: It is recommended that a licenced workshop or tradesperson carry out the above procedure and that workshop manual and relevant safety procedures are followed in addition to the above.

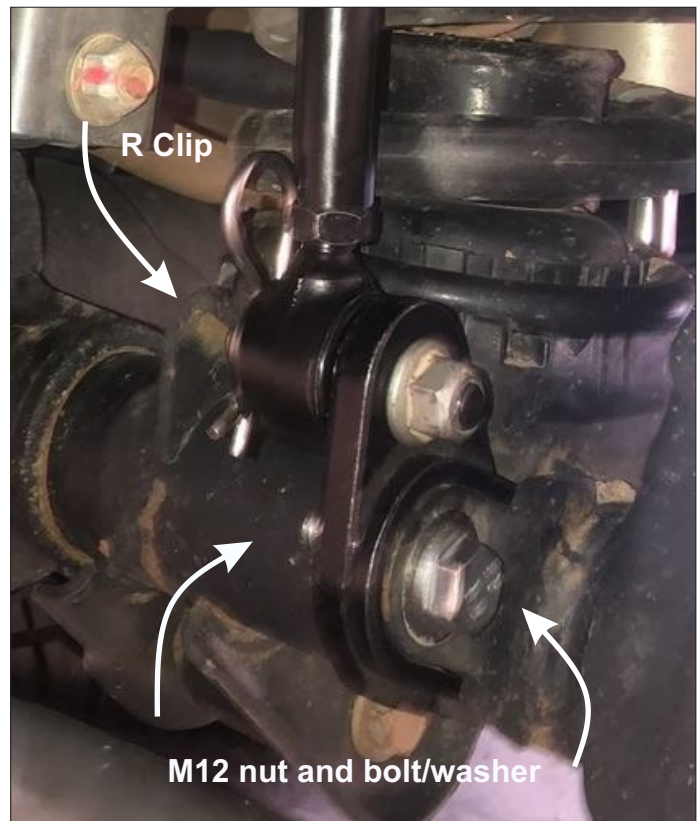
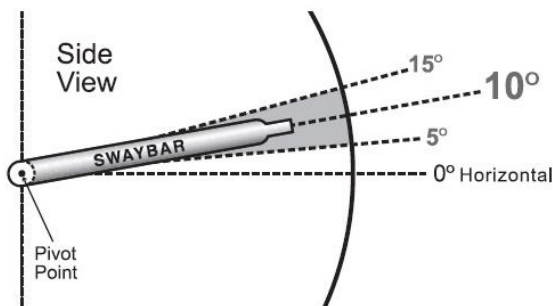
# Instructions

## Front Swaybar - Quick Release Links

This instruction sheet should be used in conjunction with the workshop manual and proper safety procedures followed.

### Continued - LH side bracket -

- Bolt up RH side bracket with supplied M12x40mm bolt and Nyloc nut.
- Bolt up disconnect Pin with supplied M12 flange nut and washer.



- Bolt up link to swaybar with supplied M12 nyloc nut and washer.

Leave centre turn-buckle and lock nuts loose for now.

**\*\*For best performance, confirm swaybar is near horizontal (parallel with the road) when vehicle is at ride height. A maximum of 10 degrees incline is recommended.**

**Refer Page 3**

N.B: It is recommended that a licenced workshop or tradesperson carry out the above procedure and that workshop manual and relevant safety procedures are followed in addition to the above.

# Instructions

## Front Swaybar - Quick Release Links

This instruction sheet should be used in conjunction with the workshop manual and proper safety procedures followed.

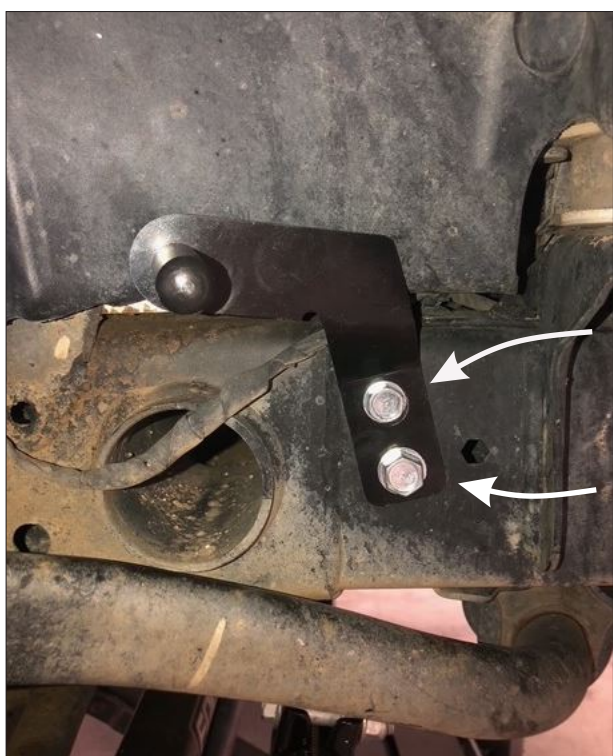
Continued -

**Note - check centre turn buckle is evenly screwed into both ends.**

This product is designed for raised\_ vehicles only - 2-6 inches.

Adjust turn buckles to remove any pre-load from LH side verse RH side. This will create a more balanced chassis when turning from LH to RH corners.

Then tighten lock nuts.



### Storage Pins and Brackets -

- Bolt up storage pins to brackets with supplied nyloc nuts and small flat washers.
- Start by bolting up storage bracket with supplied small flange screw - screw into existing hole in chassis (upper hole).
- Then use larger flange screw for lower hole.
- Test drive and re-check all bolts after 200 kms/miles

N.B: It is recommended that a licenced workshop or tradesperson carry out the above procedure and that workshop manual and relevant safety procedures are followed in addition to the above.