

# PERRIN

## Shift Knob for 2015+ WRX 6 Speed Manual

2021-04-06

PSP-INR-132-X

Thank you for purchasing this PERRIN product for your car! Installation of this product should only be performed by persons experienced with installation of aftermarket performance parts and proper operation of high performance vehicles. If vehicle needs to be raised off the ground for installation, the installer must use proper jacks, jack-stands and/or a professional vehicle hoist for safety of the installer and to protect property. If the vehicle is lifted improperly, serious injury or death may occur! Please read through all instructions before performing any portion of installation. If you have any questions, please contact our tech department prior to starting installation. We can be reached in any of the following methods:

Email [Tech@PERRINperformance.com](mailto:Tech@PERRINperformance.com)

Instant Chat off the main page of [www.PERRINperformance.com](http://www.PERRINperformance.com)

Or simply call our tech team at 503-693-1702

### SPECIAL NOTES:

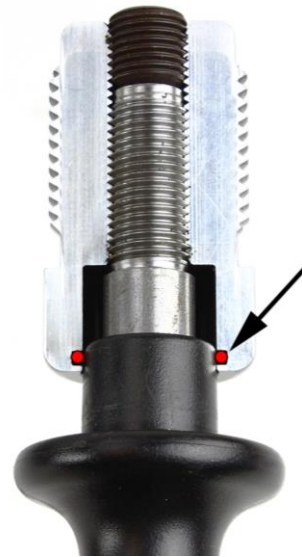
- The plastic reverse lock-out lever can vary in size from model to model. If you experience the reverse lock-out getting stuck inside the PERRIN shift knob, we have included a second, thinner o-ring that can be used. Simply remove the one that we have installed and install this thinner one. If you are still experiencing trouble, contact the PERRIN Tech department.
- **FINISH OF YOUR SS KNOB:** Each stainless-steel shift knob has a grained type finish which will patina with time. Normal use can polish it or scratch it over time. Because the knob is raw stainless steel, it can be refinished with a light duty abrasive like a Scotch-Brite pad. If knob is laser engraved on the top, using an aggressive sandpaper may remove too much material causing logo and pattern to wear down.
- **FINISH OF YOUR Cerakote KNOB:** Each Cerakoted knob will patina slightly with time. Normal use can slightly polish it over time. Because of the ceramic type finish, we only recommend cleaning with chemicals, not with abrasives. The use of alcohol or acetone (we think is the best chemical) to clean it from time to time is recommended.

### Parts Included with the PERRIN Shift Knob:

- (1) Shift Knob
- (1) 12x1.25 Thread Pitch Adapter for 6spd Manual
- (1) Additional 18mm O-ring
- (1) 6mm Allen Wrench



Height  
Adjustable  
With Set Screw  
Placement



Make Sure  
O-Ring  
Just Barely  
Touches  
Reverse  
Lock-Out

This picture shows outer knob removed from adapter and set screw exposed and ready for adjustment.

### Installation of Shift Knob

1. Remove OEM shift knob by unscrewing counterclockwise.
2. Install PERRIN shift knob to shifter and follow instructions for correct adjustment to ensure anti-rattle feature functions correct.
  - a. Thread adapter onto shifter until it stops and back off roughly 1 turn. Fully tighten set screw and install knob to adapter. Wiggle reverse lockout and check to make sure it contacts the o-ring inside of adapter. **NOTE: The adapter has a range of roughly 1-1/2 turns from fully tightened, that it will still function as an anti-rattle device. Used this as a guide for the next few steps to ensure the anti-rattle feature functions as designed. See above note about the reverse lock-out getting stuck in the PERRIN Shift knob if you are experiencing trouble.**
  - b. Take note of orientation of logo and shift pattern, then unscrew knob from adapter. Loosen the set screw and rotate adapter to correct misalignment. Fully tighten the set screw, then reinstall knob. Continue to use this method until orientation of logo and or shift pattern is where you desire it. Tighten set screw to 15-20ft-lbs to secure.
  - c. After knob is aligned, wiggle the plastic reverse lock-out and make sure it still contacts the o-ring inside of the shift knob adapter. If the reverse lockout no longer contacts the o-ring inside the adapter when wiggled, then the adapter was unscrewed too far. Remove knob, loosen set screw, screw adapter down 1 full turn and then retighten set screw. If done correctly, the shift knob will be aligned properly and the reverse lock-out will contact the o-ring inside the adapter when it is wiggled.

Questions, Comments and Suggestions Contact: [Tech@PERRINperformance.com](mailto:Tech@PERRINperformance.com)

Visit Our Website for Instant Chat Options at [www.PERRINperformance.com](http://www.PERRINperformance.com)

Call Our Tech Team at 503-693-1702