

Instructions

Front Control Arm Bushings

N.B: This instruction sheet should be used in conjunction with the workshop manual and proper safety procedures followed.

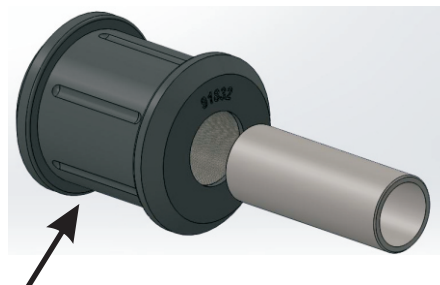
- Raise vehicle evenly and safely support.

Never rely on a Jack only

- Proceed to remove rear wheels
- Completely remove control arms from vehicle.
- Loosen and remove the rear nut at back of control arm.
- Using a Press, press out the original bushing, including the steel outer shell.

Note - use soapy water to press new bushing in aluminium housing.

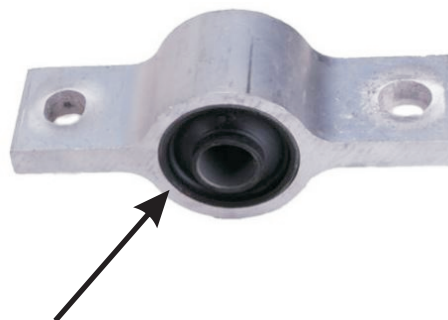
- Grease bushing internal diameter and side faces with supplied grease only.
- Push in supplied steel tube inside bushing.
- Bolt up bushing bracket with original nut and washer.
- A wheel alignment is recommended after install.



Use soapy water to press new bushing



Re-use OE nut and washer



Press out OE bushing including steel outer shell

N.B: It is recommended that a licenced workshop or tradesperson carry out the above procedure and that workshop manual and relevant safety procedures are followed in addition to the above.